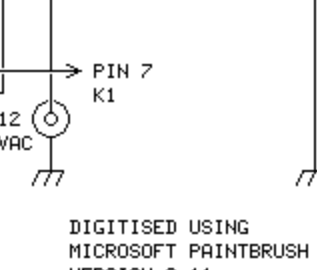
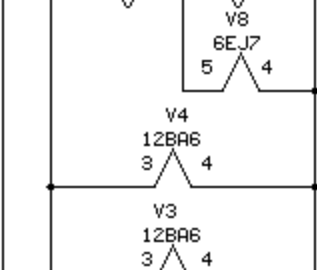
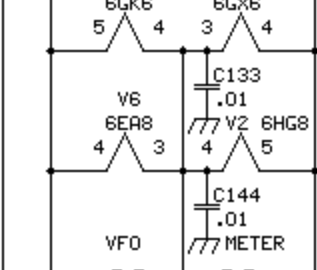
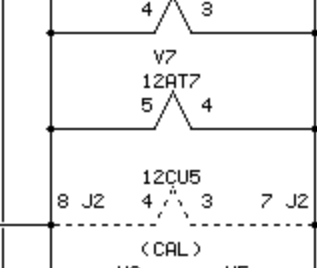
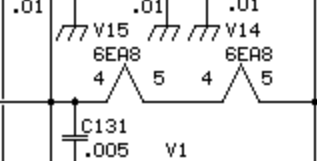
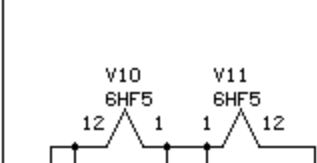
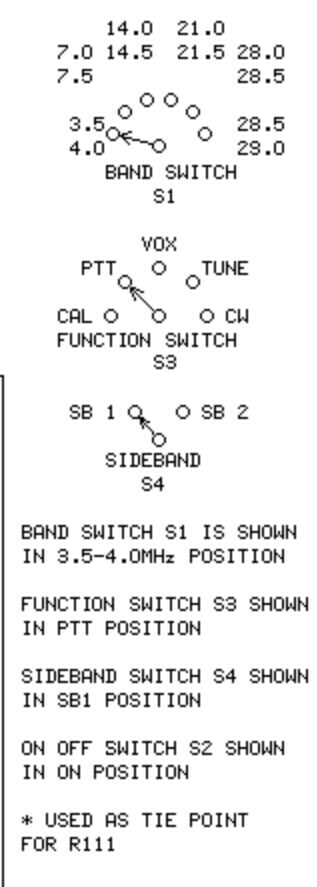
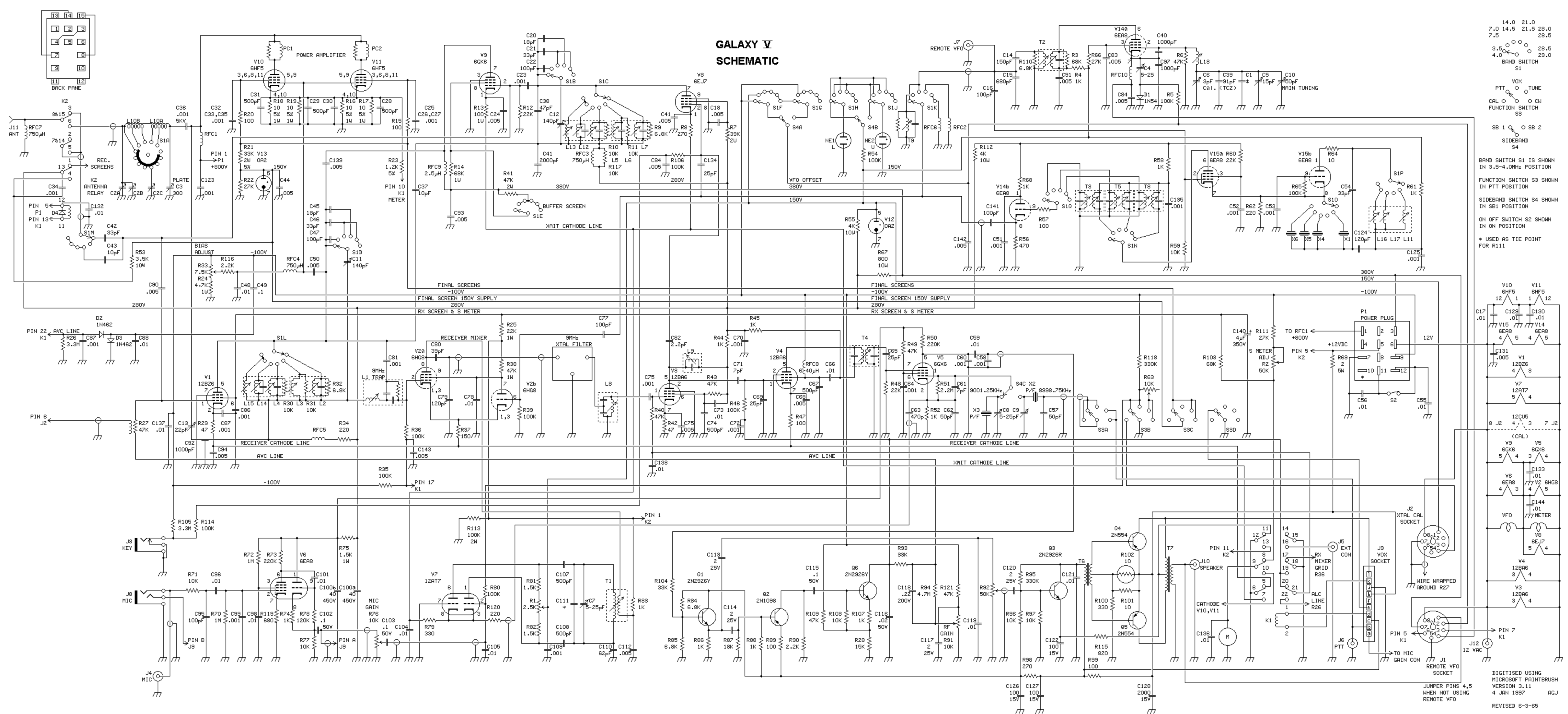


GALAXY V SCHEMATIC



BAND SWITCH S1 IS SHOWN IN 3.5-4.0MHz POSITION
 FUNCTION SWITCH S3 SHOWN IN PTT POSITION
 SIDE BAND SWITCH S4 SHOWN IN SB1 POSITION
 ON OFF SWITCH S2 SHOWN IN ON POSITION
 * USED AS TIE POINT FOR R111